

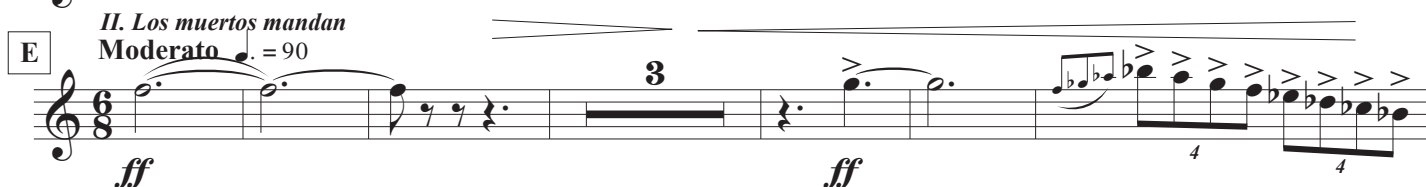
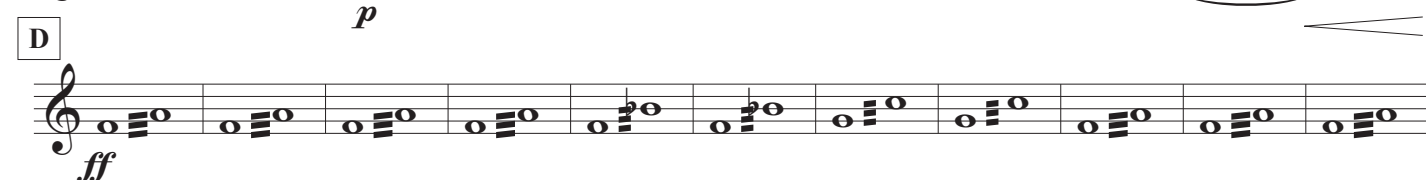
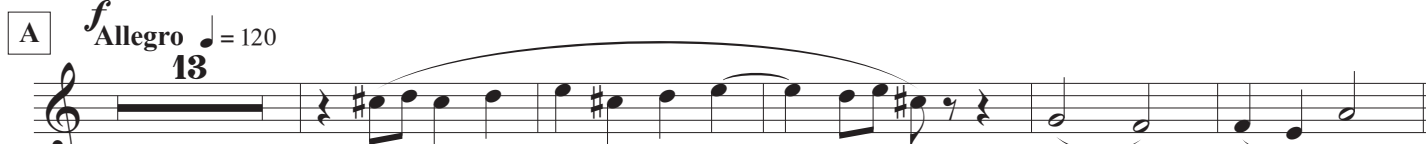
AZUL SEGRELLES

Poema descriptivo para banda sinfónica

Juan Carlos Sempere Bomboí

I. La Catedral

Adagio $\text{♩} = 60$



AZUL SEGRELLES

2
102

mf

9

mf

118

3

ff

F Allegro ♩. = 120

2

f

136

143

2

ff

151

158

G

Poco menos ♩. aprox. 94-100

172

f

Molto rit.

H III. Las mil y una noches
Adagio ♩. = 60

p

pp

182

185

187

3

rit.

193

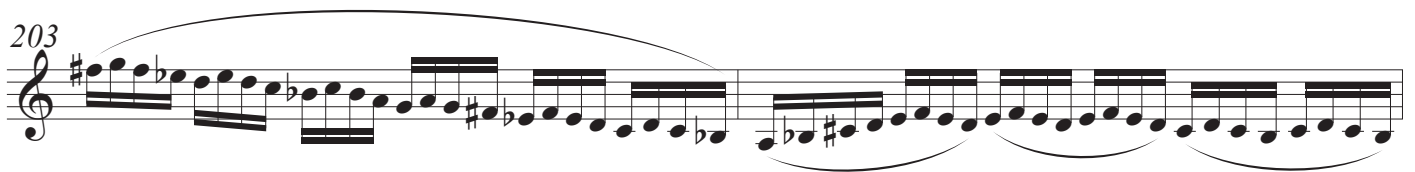
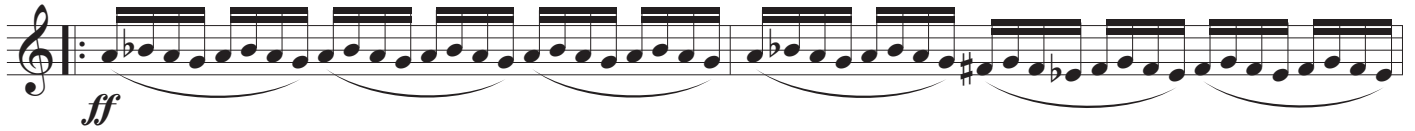
mf

AZUL SEGRELLES

3

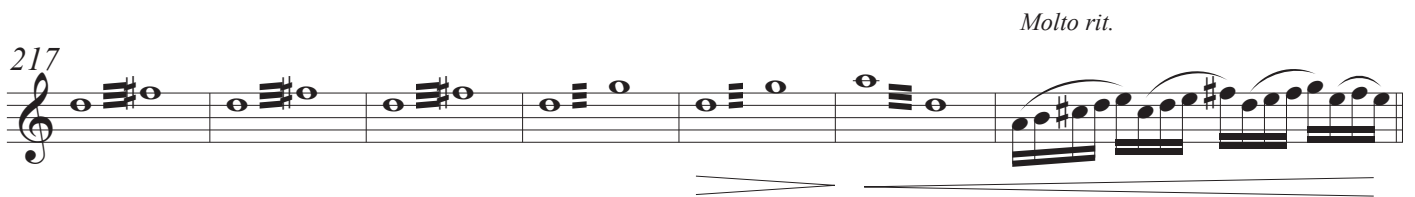
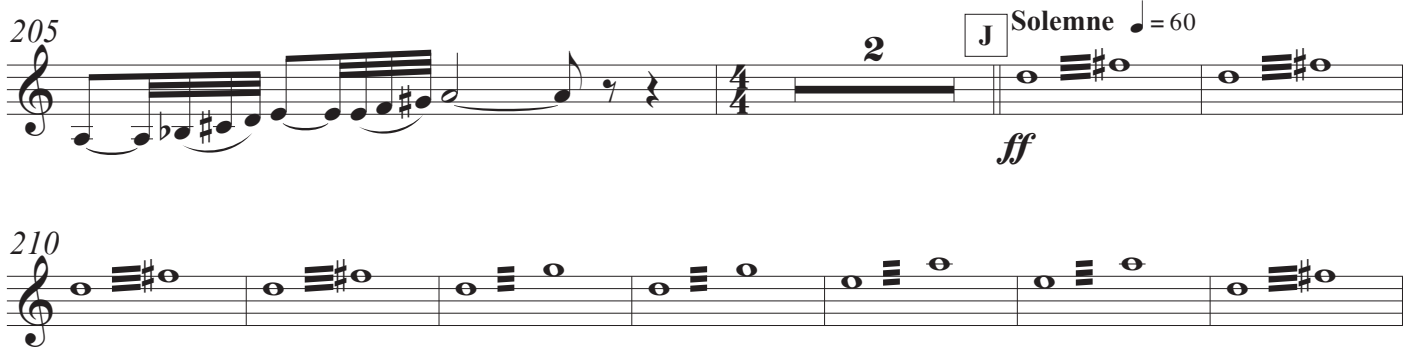
I

Con bravura ♩ = 54

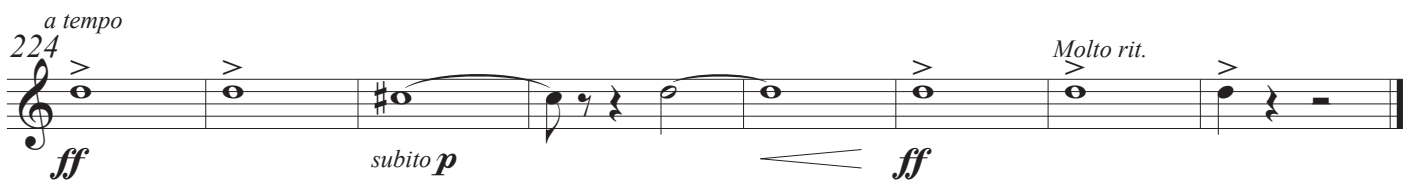


IV. Azul Segrelles

Solemne ♩ = 60

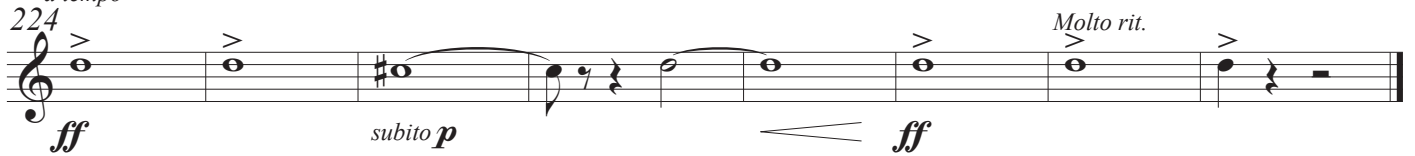


Molto rit.



a tempo

Molto rit.



subito *p*

ff